



# PRODUCT RANGE

---

FULLY VITRIFIED/  
ACCESSORY TILES

Argelith Ceramic Tiles, Inc.

# ARGELITH

# INDEX

PAGE 3	COLORS AND SURFACES
PAGE 4	APPLICATION AREAS
PAGE 5	HEXALITH® HEXAGONAL TILES
PAGE 6	FULLY VITRIFIED RECTANGULAR TILES
PAGE 7	FULLY VITRIFIED SQUARE TILES
PAGE 8	KERASIG: SAFETY MARKINGS
PAGE 9	WALL TILES
PAGE 10 - 11	EXPERIENCE ARGELITH (VISUAL INSPIRATION)
PAGE 12 - 13	ACCESSORY TILES
PAGE 14 - 15	EXPERIENCE ARGELITH (VISUAL INSPIRATION)



**HEXALITH®**  
HEXAGONAL TILES



Color deviations from original product may be caused by printing.  
Our current terms and conditions apply.  
You can find our terms and conditions under: [www.argelithusa.com/terms-and-conditions/](http://www.argelithusa.com/terms-and-conditions/).

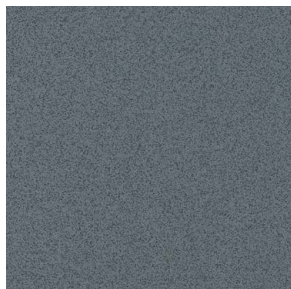
# ARGELITH

## COLORS AND SURFACES

FULLY VITRIFIED TILES



200 Light Gray



220 Titan Gray



230 Anthracite



300 Beige



400 Sand Yellow



510 Mars Red

## SURFACES

To meet the diverse needs of various rooms and workspaces, we offer different levels of slip resistance. Our tiles are categorized based on the following distinctions in slip resistance.



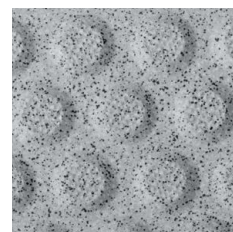
R10



R11 | R12



R12V06



R13V10

## SPECIAL COLORS

Unlock Infinite Design Possibilities: Our advanced in-house raw material preparation and cutting-edge digital printing technology empower you to achieve any desired color and unique design. Please note, a minimum purchase quantity is required for Specialty Colors.



Various  
decor colors



Various  
color selection



Customized  
digital printing



[www.argelithusa.com](http://www.argelithusa.com)

ARGELITH

# FIELDS OF APPLICATION

## CERAMIC FLOORING FOR INDUSTRIAL SECTORS

Argelith® Fully Vitrified Tiles: A Durable Solution for Heavy-Duty, Chemically Resistant, and Hygienically Safe Flooring. Experience longevity and daily resilience that lasts for decades.

### BEVERAGE INDUSTRY



### DAIRY INDUSTRY



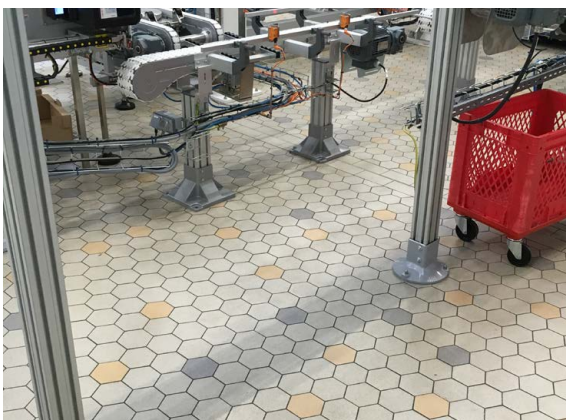
### FOOD INDUSTRY



### AUTOMOTIVE INDUSTRY



### BAKING INDUSTRY



### RESTAURANT AND FOOD RETAIL INDUSTRY




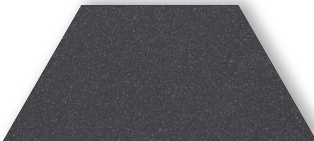


ARGELITH

# HEXAGONAL TILES HEXALITH®


		Color	Number	Thickness		Surface			
SERIES HEXALITH	Hexalith 4 1/4" x 5"	Light Gray	200	5/8"	R10	R11			
				3/4"	R10	R11	R12	R12/V06	R13/V10
		Titan Gray	220	5/8"	R10	R11			
				3/4"	R10	R11			
		Anthracite	230	5/8"	R10	R11			
				3/4"	R10	R11			
		Beige	300	5/8"	R10	R11			
				3/4"	R10	R11	R12	R12/V06	R13/V10
Sand Yellow	400	3/4"		R11					
Mars Red	510	3/4"		R11					



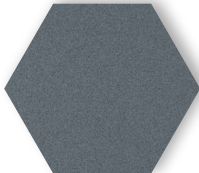


Pieces / lft  
(incl. joint)

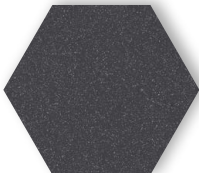
MATERIAL REQUIREMENT	Finishing Tiles	Point	3
		Blunt	1,5



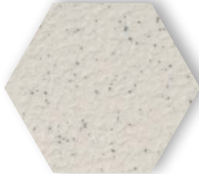
200 Light Gray




220 Titan Gray



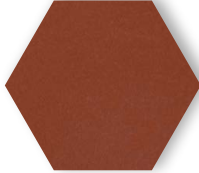
230 Anthracite



300 Beige



400 Sand Yellow



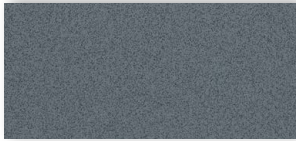
510 Mars Red

		Thickness	Pieces / Sq. Ft. (incl. joint)	Pieces / Box	Sq. Ft. / Box	Sq. Ft. / Pallet	Lbs. / Pallet
MATERIAL REQUIREMENT	Hexalith 4 1/4" x 5"	5/8"	9.06	48	5.30	approx. 334	approx. 2,400
		3/4"	8.97	40	4.46	approx. 281	approx. 2,375

# RECTANGULAR TILES



200 Light Gray



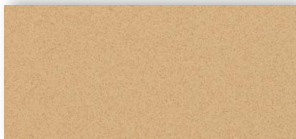
220 Titan Gray



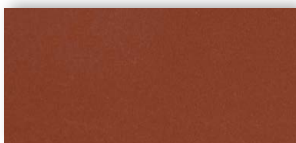
230 Anthracite



300 Beige



400 Sand Yellow



510 Mars Red

Additional  
Special Colors  
Available  
Upon Request

		Color	Number	Thickness		Surface			
RECTANGULAR TILES	Rectan- gular 4" x 8"	Light Gray	200	5/8"	R10	R11	R12	R12/V06	
				3/4"	R10	R11	R12	R12/V06	R13/V10
		Titan Gray	220	5/8"	R10	R11	R12	R12/V06	
				3/4"	R10	R11	R12	R12/V06	
		Anthracite	230	5/8"	R10	R11	R12	R12/V06	
				3/4"	R10	R11	R12	R12/V06	
		Beige	300	5/8"	R10	R11	R12	R12/V06	
				3/4"	R10	R11	R12	R12/V06	
		Sand Yellow	400	5/8"	R10	R11			
				3/4"	R10	R11			
		Mars Red	510	5/8"	R10	R11	R12	R12/V06	
				3/4"	R10	R11	R12	R12/V06	
	Rectan- gular 4.5" x 9.5"	Sand Yellow*	400	5/8"	R10	R11			
				3/4"	R10	R11			
		Mars Red	510	5/8"	R10	R11	R12		
				3/4"	R10	R11			

Additional colors and surfaces are available upon request but may be subject to minimum order quantities.  
\*Only available in special choice.

		Format	Thickness	Pieces / Sq. Ft. (incl. joint)	Pieces / Box	Sq. Ft. / Box	Sq. Ft. / Pallet	Lbs. / Pallet
MATERIAL REQUIREMENT	Rectan- gular	4" x 8"	5/8"	4.65	26	5.60	Approx. 336	Approx. 2,235
			3/4"	4.65	22	4.73	Approx. 284	Approx. 2,328
		4.5" x 9.5"	5/8"	3.07	26	8.48	Approx. 381	Approx. 2,423
			3/4"	3.07	22	7.18	Approx. 322	Approx. 2,447

# SQUARE TILES

SQUARE TILES


Color	Number	Thickness	Surface				
SQUARE 8" x 8"	Light Gray	200	3/8"	R10			
			5/8"	R10	R11	R12	R12/V06
			3/4"	R10	R11		
	Titan Gray	220	5/8"	R10	R11	R12	R12/V06
			3/4"	R10	R11		
	Anthracite	230	3/8"	R10			
			5/8"	R10	R11	R12	R12/V06
			3/4"	R10	R11		
	Beige	300	3/8"	R10			
5/8"			R10	R11	R12	R12/V06	
3/4"			R10	R11			
SQUARE 12" x 12"	Light Gray	200	1/2"	R10	R11		
			5/8"	R10	R11		
	Titan Gray	220	1/2"	R10	R11		
			5/8"	R10	R11		
	Anthracite	230	1/2"	R10	R11		
			5/8"	R10	R11		
	Beige	300	1/2"	R10	R11		
			5/8"	R10	R11		
	SQUARE 16" x 16"	Light Gray	200	5/8"	R10	R11	
Anthracite		230	5/8"	R10	R11		




200 Light Gray



220 Titan Gray



230 Anthracite



300 Beige

Additional  
Special Colors  
Available  
Upon Request

Additional colors and surfaces are available upon request but may be subject to minimum order quantities.

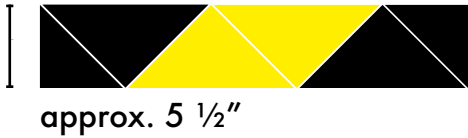
		Format	Thickness	Pieces / Sq. ft. (incl. joint)	Pieces / Box	Sq. Ft. / Box	Sq. Ft. / Pallet	Lbs. / Pallet
MATERIAL REQUIREMENT	SQUARE	8" x 8"	3/8"	2.33	22	9.44	Approx. 568	Approx. 2,329
			5/8"	2.33	13	5.60	Approx. 336	Approx. 2,304
			3/4"	2.33	11	4.72	Approx. 285	Approx. 2,329
		12" x 12"	1/2"	1.02	11	10.78	Approx. 430	Approx. 2,425
			5/8"	1.02	9	8.82	Approx. 352	Approx. 2,381
		16" x 16"	5/8"	0.59	5	8.55	Approx. 239	Approx. 1,665

# SAFETY MARKINGS KERASIG

## THE CERAMIC SOLUTION FOR FLOOR MARKINGS

Introducing Kerasig, a specialized product by Argelith designed for lasting floor markings. Unlike floor marking paint or tape, Kerasig markings are strategically laid out in specific patterns and seamlessly integrated into the ceramic flooring. The benefit is clear: the tiles are wear-resistant, providing a fully covered and durable floor system. Choose from three different widths when laying Kerasig tiles: 5 1/2", 7 7/8", or 11" to suit your specific needs.

		Width	Thickness	Pieces / Ln. Ft. Full Tiles (incl. joint)	Pieces/ Ln. Ft. Half Tiles (incl. joint)	Surface
MATERIAL REQUIREMENT	KERASIG	approx. 5 1/2"	3/4"		2.44	R11
			5/8"		2.44	R11
			5/8"		2.44	R12/V06
		approx. 7 7/8"	3/4"		3.05	R11
			5/8"		3.05	R11
			5/8"		3.05	R12/V06
		approx. 11"	3/4"	1.22	2.44	R11
			5/8"	1.22	2.44	R11
			5/8"	1.22	2.44	R12/V06





ARGELITH

# WALL TILES

SLIM PROFILES: FULLY VITRIFIED TILES FOR WALL APPLICATIONS



200 Light Gray



207 Uni Gray\*

		Color	Color Number	Thickness	Surface
WALL TILES	SQUARE 8" x 8"	Light Gray	200	$\frac{3}{8}$ "	R10
		Uni Gray	207	$\frac{3}{8}$ "	Smooth

Additional colors and surfaces are available upon request but may be subject to minimum order quantities.

MATERIAL REQUIREMENT	SQUARE	Format	Thickness	Pieces / Sq. ft. (incl. joint)	Pieces / Box	Sq. ft. / Box	Sq. Ft. / Pallet	Lbs. / Pallet
		8" x 8"	$\frac{3}{8}$ "	2.33	22	9.47	approx. 568	approx. 2,329





**WINERY WITH HEXAGONAL FULLY VITRIFIED TILES**



**WORKSHOP WITH 4" x 8" LIGHT GRAY RECTANGULAR FULLY VITRIFIED TILES**





**KITCHEN WITH HEXAGONAL  
DARK GRAY FULLY VITRIFIED TILES**



**BOTTLING PLANT IN THE BEVERAGE INDUSTRY WITH  
HEXAGONAL SAND YELLOW FULLY VITRIFIED TILES**



# ACCESSORY TILES

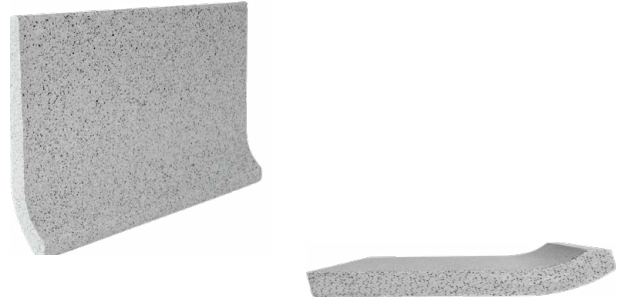
## FULLY VITRIFIED ACCESSORY TILES

### COVERED BASE SKIRTING

		Color	Thickness
COVERED BASE SKIRTING	4" x 8"	Light Gray	3/8", 5/8", 3/4"
		Titan Gray	3/8", 5/8", 3/4"
		Anthracite	3/8", 5/8", 3/4"
		Beige	3/8", 5/8", 3/4"
		Sand Yellow	3/8", 3/4"
		Mars Red	3/8", 5/8"

Additional colors are available upon request but may be subject to minimum order quantities.

### COVERED BASE SKIRTING VERTICAL



### COVERED BASE SKIRTING HORIZONTAL

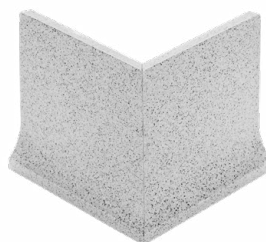
		Thickness	Pieces/ Ln. Ft. (incl. joint)	Pieces / Box	Ln. Ft. / Box	Ln. Ft. / Pallet	Lbs. / Ln. Ft.	Lbs. / Pallet
MATERIAL REQUIREMENT	4" x 8"	3/8"	1.52	25	approx. 16.45	approx. 1.230	1.71	2,103
		5/8"	1.52	15	approx. 9.87	approx. 738	2.48	1,830
		3/4"	1.52	15	approx. 9.87	approx. 590	3.02	1,782

### RIGHT ANGLE COVERED BASE SKIRTING

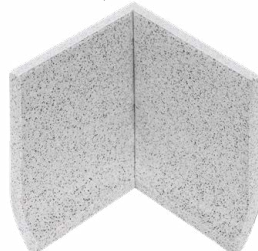
### CORNERS

#### EXTERNAL RIGHT ANGLE COVERED BASE SKIRTINGS

	Light Gray
	Titan Gray
	Anthracite
	Beige
	Sand Yellow
	Mars Red



#### INTERNAL RIGHT ANGLE COVERED BASE SKIRTINGS



#### EXTERNAL CORNER



#### INTERNAL CORNER





# ACCESSORY TILES

## FULLY VITRIFIED ACCESSORY TILES

### STAIR TREAD TILES

		Color	Thickness	Surface	Pieces / Ln. Ft. (incl. joint)	Pieces / Box	Ln. Ft. / Box	Ln. Ft. / Pallet	Lbs. / Ln. Ft.	Lbs. / Pallet
STAIR TREAD TILES bullnose edge with grooves	12" x 12"	Light Gray	1/2"	R10	1.02	11	approx. 10.78	approx. 411	5.63	2,425
		Titan Gray	1/2"	R10	1.02	11	approx. 10.78	approx. 411	5.63	2,425
		Anthracite	1/2"	R10	1.02	11	approx. 10.78	approx. 411	5.63	2,425
		Beige	1/2"	R10	1.02	11	approx. 10.78	approx. 411	5.63	2,425
	16" x 16"	Light Gray	5/8"	R10	0.76	5	approx. 6.56	approx. 183	9.10	1,666
		Anthracite	5/8"	R10	0.76	5	approx. 6.56	approx. 183	9.10	1,666

Additional colors are available upon request but may be subject to minimum order quantities.

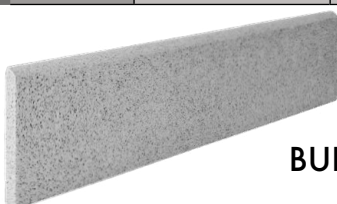


STAIR TREAD TILE  
BULLNOSE EDGE  
WITH GROOVES

### BULLNOSE / STRIP TILE

		Color	Thickness	Pieces/ Sq. Ft. (incl. joint)	Pieces / Box	Ln. Ft. / Box	Ln. Ft. / Pallet	Lbs. / Ln. Ft.	Lbs. / Pallet
BULLNOSE & STRIP TILE	3" x 12" rounded	Light Gray	1/2"	1.02	28	27.45	approx. 1,655	1.28	2,259
		Titan Gray	1/2"	1.02	28	27.45	approx. 1,655	1.28	2,259
		Anthracite	1/2"	1.02	28	27.45	approx. 1,655	1.28	2,259
		Beige	1/2"	1.02	28	27.45	approx. 1,655	1.28	2,259
	3" x 16" rounded	Light Gray	5/8"	0.76	15	19.69	approx. 944	2.60	1,653
		Anthracite	5/8"	0.76	15	19.69	approx. 944	2.60	1,653

Additional colors are available upon request but may be subject to minimum order quantities.



BULLNOSE / STRIP TILE





**WORKSHOP WITH 4" x 8" RECTANGULAR FULLY VITRIFIED TILES**



**BREWERY WITH HEXAGONAL FULLY VITRIFIED TILES**



**BEVERAGE INDUSTRY WITH HEXAGONAL FULLY VITRIFIED TILES AND COLOR PATTERN**

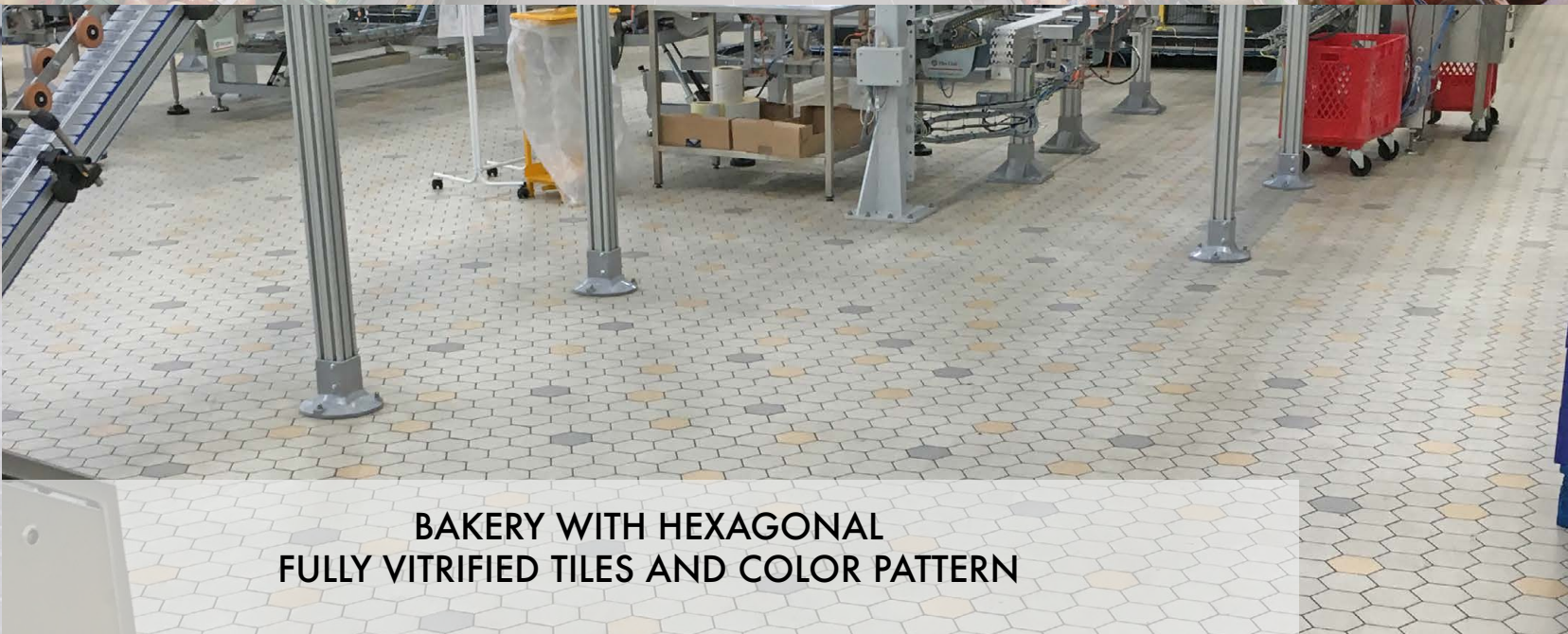




**FIRE STATION WITH HEXAGONAL FULLY VITRIFIED TILES**

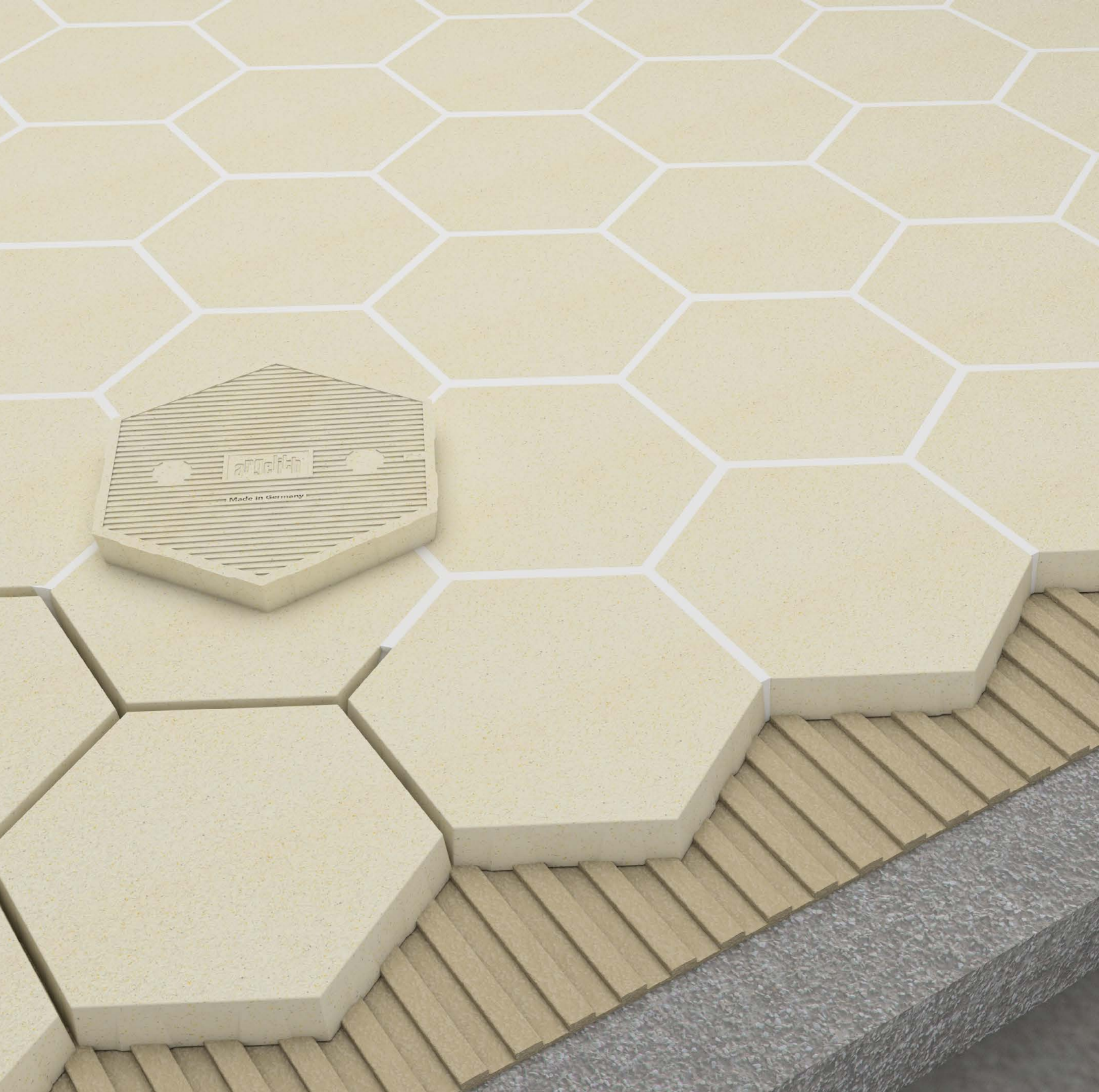


**GROCERY STORE WITH 16" x 16" SQUARE FULLY VITRIFIED TILES**



**BAKERY WITH HEXAGONAL FULLY VITRIFIED TILES AND COLOR PATTERN**





**Argelith Ceramic Tiles, Inc.**

40W310 LaFox Road, Suite F2, St. Charles, IL 60175

Phone: (630) 444-0665 • Fax: (630) 444-0667

info@argelithusa.com • www.argelithusa.com